

FULTON Performance Products



KW1500/KW2000 SERIES STANDARD WORK WINCH OWNERS' MANUAL

⚠ WARNING ⚠

This winch is of a general purpose design for **manual** operation only and the load rating is based on a intermittent duty cycle. This winch **is not** designed to be a human hoist and should never be operated

when there are persons positioned on or under the load being lifted or moved.

⚠ CAUTION ⚠

Never exceed the **maximum rated capacity** shown below and on the winch frame.

Maintain a **minimum of three wraps of cable on the drum** at all times.

Never use worn, kinked, or frayed cable. These conditions are unsafe. **Replace the cable immediately.**

Be sure that the cable on the winch is strong enough to support the load to be lifted. Always inspect the cable and hook before each use

to make sure they are not damaged. If the cable or hook breaks, the cable can act like a whip and inflict serious injury to anyone in it's path.

Never stand along side the winch cable, or guide the cable with your hands.

Never permit anyone on or under the load that is being pulled or lifted.

Never operate with wet or oily hands and always use a firm grip on the handle.

Never leave a weight hanging by the winch while the winch is unattended, as unauthorized persons may attempt to operate the winch, thereby, creating an unsafe condition.

TECHNICAL SPECIFICATIONS

KW1500 SERIES

Load Capacity first layer 1500 lbs. (6.7kN)

Load Capacity top layer 750 lbs. (3.3kN)

31:1 Gear Ratio

KW2000 SERIES

Load Capacity first layer 2000 lbs. (8.9kN)

Load Capacity top layer 1000 lbs. (4.4kN)

41:1 Gear Ratio

INSTALLATION

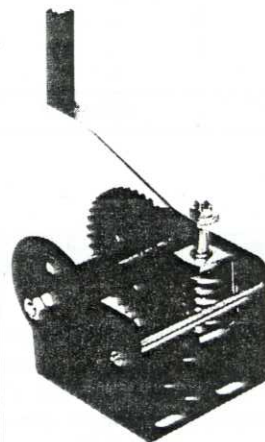
- 1 Assemble handle onto flatted input shaft end. Tighten the 1/2-13 locknut against handle.
- 2 Bolt or weld the winch to a structure capable of supporting at least 5 times the load the winch will be pulling. Frame halves must be aligned with min. gap.

When bolting the winch down, use at least grade 5, 3/8 dia. bolts, flat washers and locknut (not supplied).

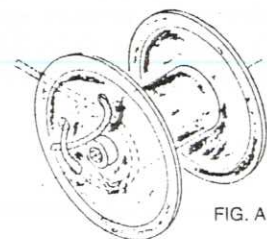
Always use the outer slots at the end opposite the direction of line pull. Use large flat washer if using center slot at opposite end.

CABLE TO DRUM

Bring cable across the top of drum and coming around to the first hole. Thread cable into the first hole, back out the second hole and through the third and passing cable end through the loop of cable between the first two holes approximately one inch. Pull tight. See Figure "A".



KEEP 3 WRAPS
AROUND DRUM

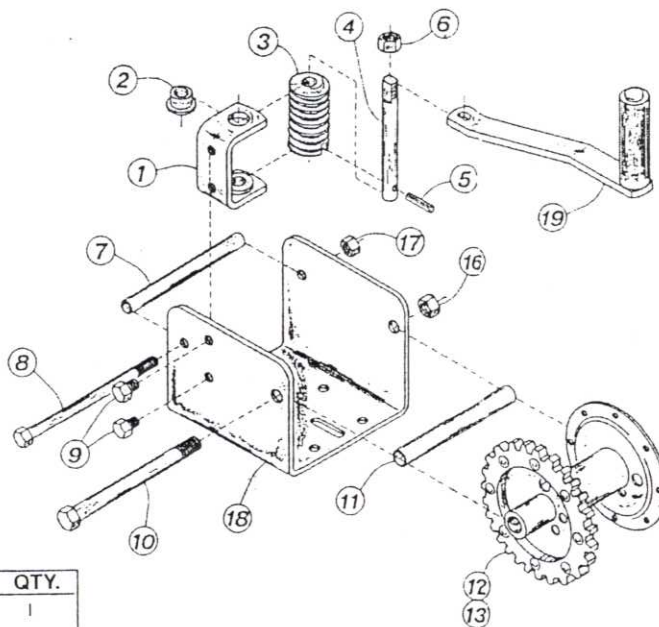


MAINTENANCE

- 1 Maintain a film of automotive type gease on the drum gear teeth, the worm threads and the O.D. of the drum spacer, Item 11 at all times.
- 2 Keep the I.D. and thrust surfaces of bushings, Item 2 lubricated with SAE 30 WT. engine oil at all times.

PARTS LIST

When repairing the winch, mark all parts in the order of disassembly to insure proper re-assembly.



ITEM	DESCRIPTION	KW1500/KW2000	QTY.
1	WORM BRACKET		1
2	BEARING P/M	Worm Assembly	2
3	WORM	Kit	1
4	SHAFT-WORM	9593-01	1
5	PIN DRIVE		1
6	LOCKNUT-1/2-13		1
7	SPACER-FRAME	*	1
8	BOLT-5/16-18x6.00 lg.	**	1
9	BOLT-5/16-18x1/2" lg.	**	2
10	BOLT-1/2-13x6.06 lg.	**	1
11	SPACER-DRUM BRG.	*	1
12	DRUM-STD. 31T.	*	1
13	DRUM-STD. 41T.	*	1
16	LOCKNUT-1/2-13	**	1
17	LOCKNUT-5/16-18	**	1
18	MAIN FRAME	*	1
19	8" HANDLE ASSEMBLY	0952002-01	1

HOW TO ORDER REPAIR PARTS

Always replace broken or bent parts before using this product. Replacement parts are available through Fulton Performance Products' Customer Service Department, 715-693-1700. Please specify product model number, name of part, and part number.

- * Not sold separately
- ** Standard hardware item

LIMITED WARRANTY

Fulton products are warranted to the original consumer purchaser to be free from defects in material and workmanship under normal use and service, ordinary wear and tear excepted, for a period of one (1) year from the date of purchase as shown on the Customer's receipt. This warranty shall not apply to any defects caused by: (I) physical abuse of the goods or any component or acts of vandalism by any persons other than Fulton, it's employees, agents, or subcontractors; (II) alterations, modifications, additions, or repairs made during the applicable warranty period by anyone other than Fulton employees, agents or subcontractors; (III) improper installation or use contrary to Fulton's instruction; or (IV) accidents or damage resulting from fire, water, wind, hail, lightning, electrical surge or failure, earthquake, theft or similar causes not caused or contributed to by the negligence of Fulton or it's employees, agents, or subcontractors.

FULTON Performance
Products

50 Indianhead Dr. • P.O. Box 8 • Mosinee WI 54455-0008 • 715/693-1700 Fax 715/693-1799