

INSTALLATION INSTRUCTIONS

EQUIPMENT REQUIRED: TIN SNIPS
 WIRING ACCESS LOCATION: PC3, PC4
 DRILL BITS: 1" HOLE SAW

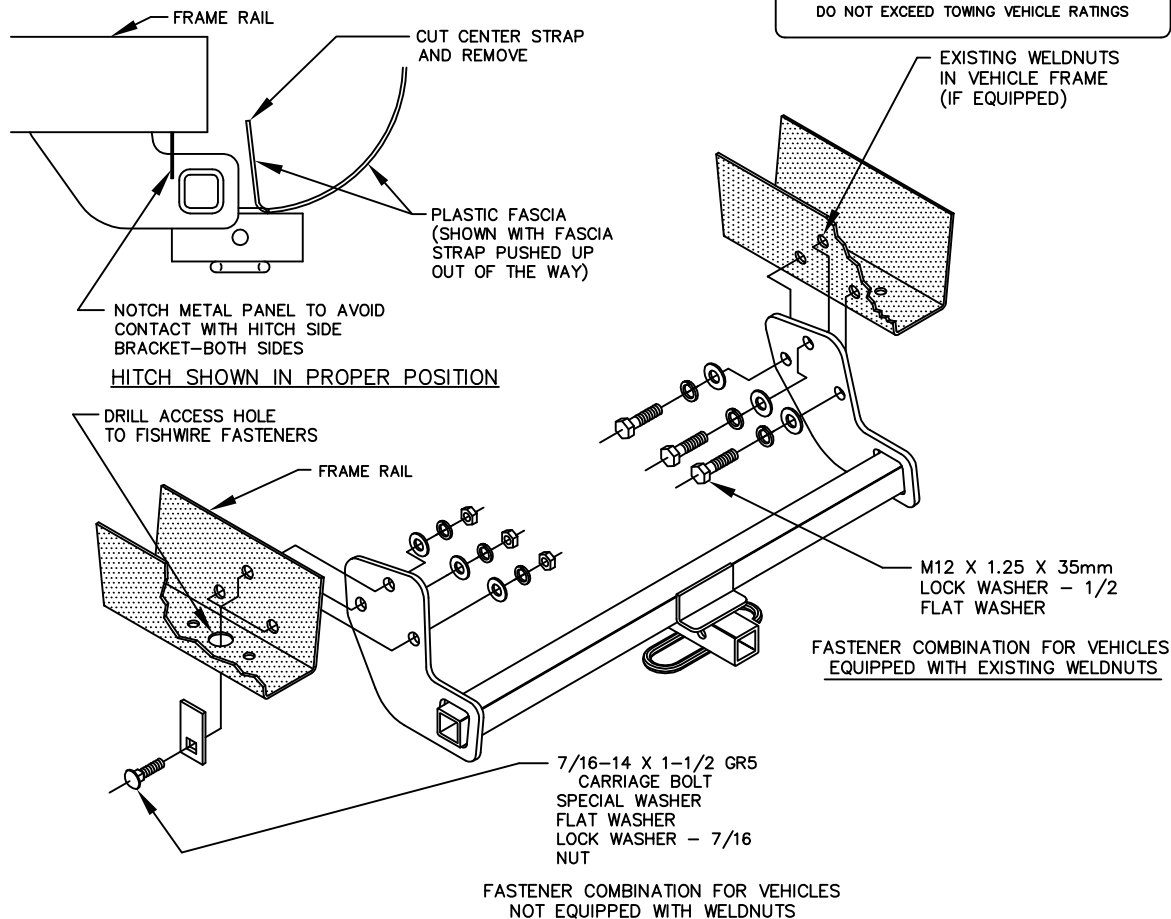
HITCH REQUIRES 1/2" PIN AND CLIP

WRENCHES: (TIGHTEN ALL FASTENERS WITH TORQUE WRENCH) 10mm, 17mm, 18mm, 11/16

VEHICLE

TOYOTA COROLLA SEDAN
 CHEVEROLET AND GEO PRIZM

2000 LB MAX GROSS TRAILER WT
 200 LB MAX TONGUE WEIGHT
 DO NOT EXCEED TOWING VEHICLE RATINGS

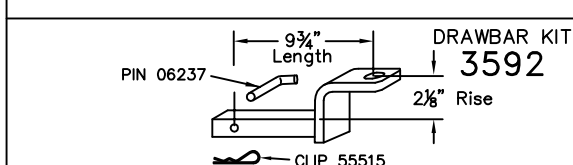


NOTE: INSTALLATION OF HITCH WILL VARY BECAUSE SOME VEHICLES ARE EQUIPPED WITH TOW HOOKS AND/OR WELDNUTS AND SOME VEHICLES ARE NOT EQUIPPED WITH WELDNUTS INSIDE THE FRAME.

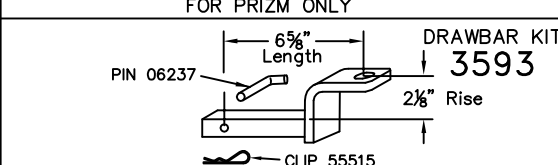
- 1A. IF VEHICLE IS EQUIPPED WITH TIE-DOWN BRACKETS AND/OR EXISTING WELDNUTS, REMOVE THE BRACKETS FROM INBOARD SIDE OF THE FRAME RAIL BY REMOVING THREE (3) M12 BOLTS, EACH SIDE. RETURN TIE-DOWN BRACKETS AND BOLTS TO VEHICLE OWNER FOR REINSTALLATION IF HITCH IS REMOVED.
- 1B. IF VEHICLE IS NOT EQUIPPED WITH WELDNUTS, DRILL A 1" DIA. ACCESS HOLE IN THE BOTTOM OF THE FRAME RAIL.
2. REMOVE FASCIA RETAINING BOLTS WHICH FASTEN PLASTIC FASCIA STRAPS TO VEHICLE TRUNK PAN.
3. NOTCH METAL PANEL TO AVOID CONTACT WITH HITCH SIDE BRACKET AS SHOWN ABOVE
4. RAISE HITCH INTO POSITION SO THAT HITCH CROSSTUBE IS ABOVE PLASTIC FASCIA STRAPS.
5. INSTALL FASTENERS PER VEHICLE CONFIGURATION AS SHOWN ABOVE.
6. REATTACH DRIVER'S SIDE PLASTIC FASCIA STRAP TO TRUNK PAN. WITH PASSENGER'S SIDE FASCIA STRAP PUSHED UP, OUT OF THE WAY, AS SHOWN ABOVE, REINSTALL FASCIA RETAINING BOLT (REMOVED IN STEP 2) INTO WELDNUT IN TRUNK PAN TO PREVENT WATER AND FUMES FROM ENTERING VEHICLE.

TIGHTEN ALL M12 CL8.8 FASTENERS TO 68 LB.-FT.
 TIGHTEN ALL 7/16 GR5 FASTENERS TO 50 LB.-FT.

STANDARD DRAWBAR (SOLD SEPARATELY)



OPTIONAL DRAWBAR (SOLD SEPARATELY) FOR PRIZM ONLY



USE ONLY THE DRAWBAR SHOWN FOR CORRECT BUMPER CLEARANCE AND HEIGHT.

DRAWBAR MUST BE USED IN THE RISE POSITION ONLY.

THIS PRODUCT COMPLIES WITH SAFETY SPECIFICATIONS AND REQUIREMENTS FOR CONNECTING DEVICES AND TOWING SYSTEMS OF THE STATE OF NEW YORK AND V.E.S.C. REGULATION V-5.

APPROX WEIGHT (LB.)

15.5

FASTENER KIT

01131-044

NOTE: Check hitch frequently, making sure all fasteners and ball are properly tightened. If hitch is removed, plug all holes in trunk pan or other body panels to prevent entry of water and exhaust fumes. A hitch or ball which has been damaged should be removed and replaced. Observe safety precautions when working beneath a vehicle and wear eye protection. Follow car maker's specs for maximum trailer weight and tongue weight. Do not cut access or attachment holes with a torch.

Cequent Performance Products
 Plymouth, Michigan
 PRINTED IN MEXICO