

SPORTFRAME[®]

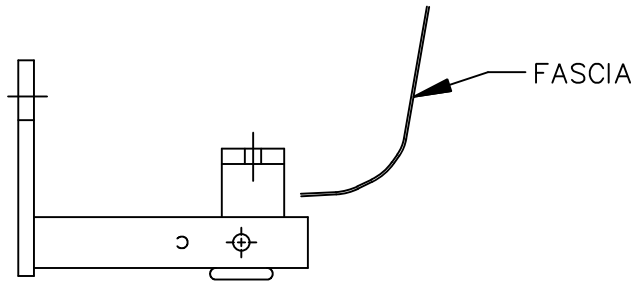
INSTALLATION INSTRUCTIONS

EQUIPMENT REQUIRED: HACKSAW

DRILL BITS: 1/2

WRENCHES: (TIGHTEN ALL FASTENERS WITH TORQUE WRENCH) 13mm, 3/4

2000 LB MAX GROSS TRAILER WT
200 LB MAX TONGUE WEIGHT
DO NOT EXCEED TOWING VEHICLE RATINGS



HITCH SHOWN IN PROPER POSITION

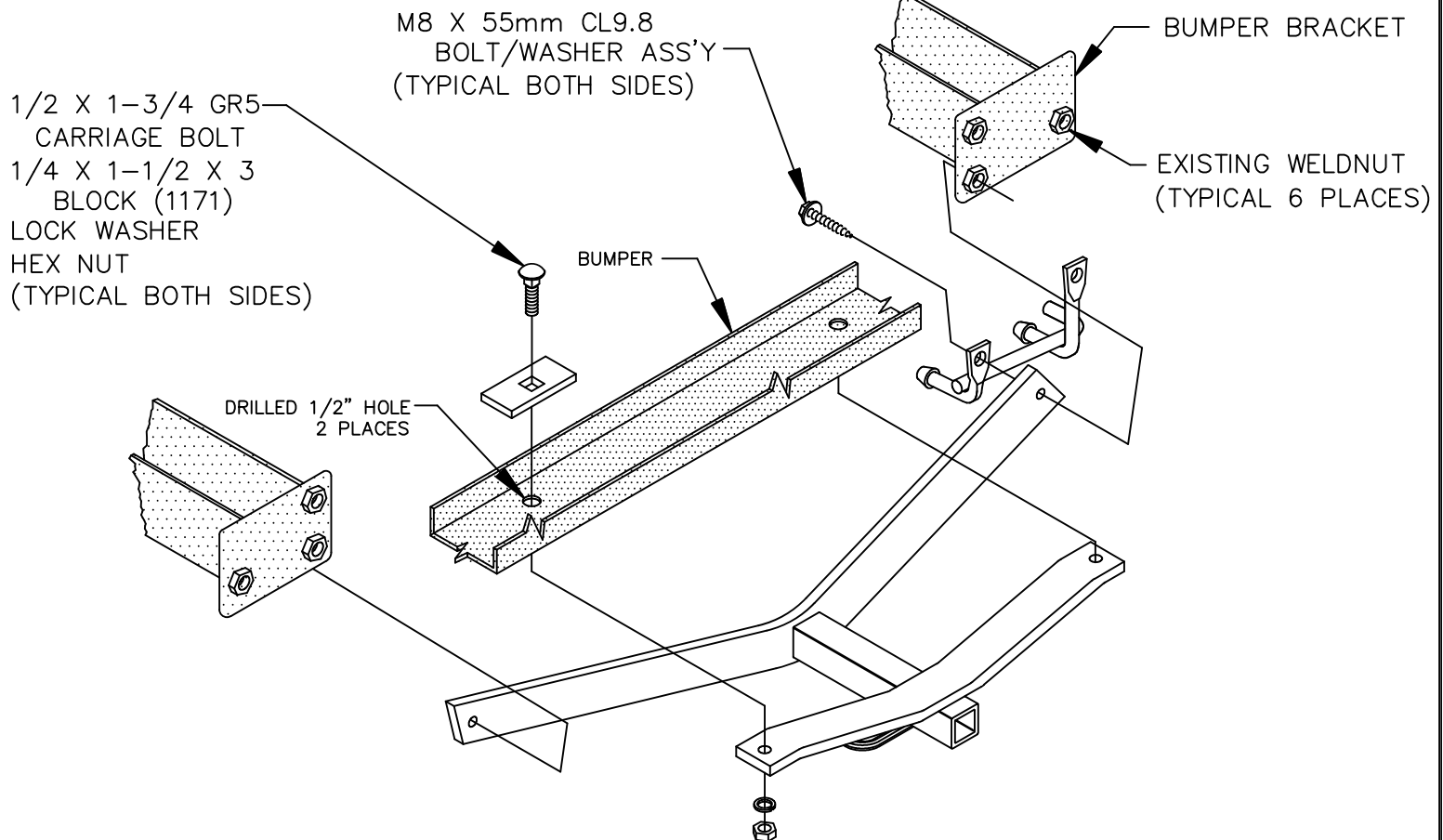


FIGURE 1
SHOWN WITH SINGLE EXHAUST SYSTEM
FOR DUAL EXHAUST SYSTEMS REPEAT
STEPS FOR BOTH SIDES

THIS PRODUCT COMPLIES WITH SAFETY SPECIFICATIONS AND REQUIREMENTS FOR CONNECTING DEVICES AND TOWING SYSTEMS OF THE STATE OF NEW YORK AND V.E.S.C. REGULATION V-5.

APPROX WEIGHT (LB.)	20	FASTENER KIT NO.	1130-946
---------------------	----	------------------	----------

NOTE: Check hitch frequently, making sure all fasteners and ball are properly tightened. If hitch is removed, plug all holes in trunk pan or other body panels to prevent entry of water and exhaust fumes. A hitch or ball which has been damaged should be removed and replaced. Observe safety precautions when working beneath a vehicle and wear eye protection. Follow car maker's specs for maximum trailer weight and tongue weight. Do not cut access or attachment holes with a torch.

SPORTFRAME[®]

INSTALLATION INSTRUCTIONS

VEHICLE

HITCH NO.

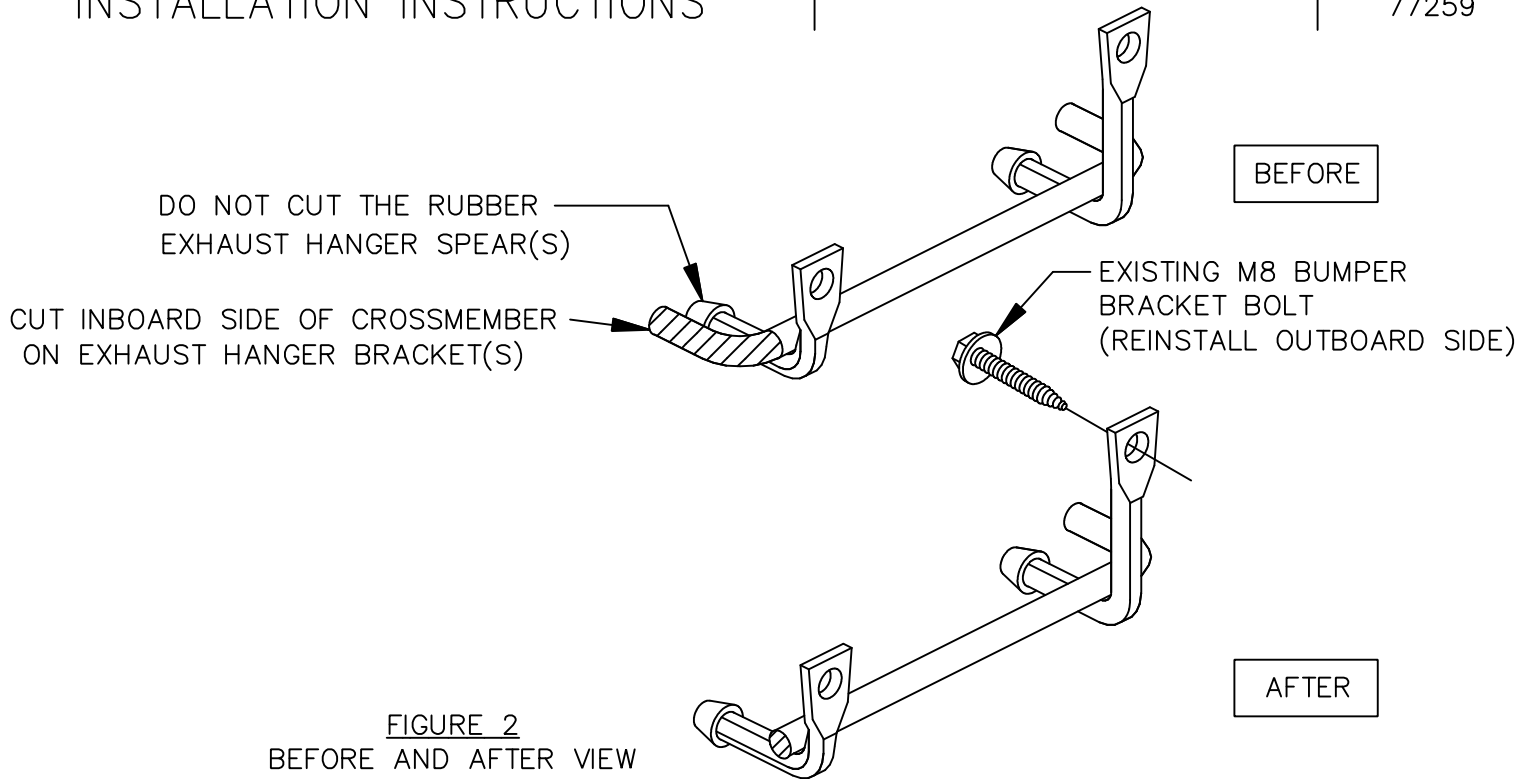
CHEVROLET MONTE CARLO
CHEVROLET LUMINA SEDAN24628
77259

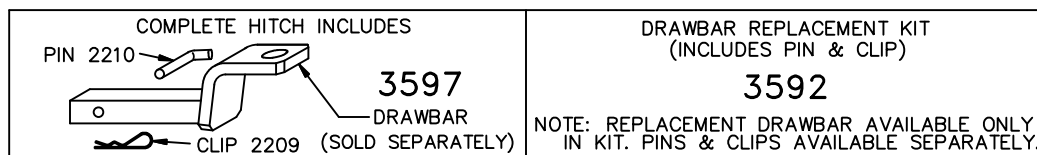
FIGURE 2
BEFORE AND AFTER VIEW
OF EXHAUST HANGER BRACKET

NOTE: FOR DUAL EXHAUST SYSTEMS REPEAT STEPS FOR BOTH SIDES.

1. LOWER THE EXHAUST SYSTEM(S) BY UNBOLTING THE M8 EXHAUST HANGER/BUMPER BRACKET BOLTS
2. DISCONNECT HANGER BRACKET(S) FROM EXHAUST SYSTEM(S), MODIFY EXHAUST HANGER BRACKET(S) AS SHOWN IN FIGURE 2 AND LOOSELY REINSTALL M8 FASTENER THRU OUT BOARD WELDNUT.
3. RAISE HITCH INTO POSITION AND LOOSELY INSTALL M8 FASTENERS PROVIDED, THRU EXHAUST HANGER, HITCH, AND BUMPER BRACKET(S), INTO THE EXISTING WELDNUT, AS SHOWN IN FIGURE 1.
4. USING HITCH AS TEMPLATE, DRILL 1/2" HOLES IN BUMPER.
5. INSTALL 1/2" FASTENERS THRU THE BLOCK (1171) AND BUMPER INTO THE HITCH WITH NUTS PROVIDED, AS SHOWN FIGURE 1.
6. REINSTALL EXHAUST SYSTEM(S) TO HANGER BRACKETS.
7. INSTALL EXHAUST HANGER FASTENERS AS SHOWN IN FIGURES 1 & 2.

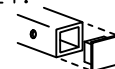
TIGHTEN 1/2 GR5 FASTENERS TO 75 LB.-FT.

TIGHTEN M8 CL9.8 FASTENERS TO 25 LB.-FT.



USE ONLY THE DRAWBAR SHOWN FOR CORRECT BUMPER CLEARANCE AND HEIGHT.
DRAWBAR MUST BE USED IN THE RISE POSITION ONLY.

REMOVE DRAWBAR WHEN NOT TOWING
TO PROTECT DRAWBAR OPENING IN HITCH WHEN NOT TOWING,
INSERT COVER #2211 (PURCHASED SEPARATELY).



THIS PRODUCT COMPLIES WITH SAFETY SPECIFICATIONS AND REQUIREMENTS FOR CONNECTING DEVICES AND TOWING SYSTEMS OF THE STATE OF NEW YORK AND V.E.S.C. REGULATION V-5.

APPROX WEIGHT (LB.)

FASTENER KIT NO.

NOTE: Check hitch frequently, making sure all fasteners and ball are properly tightened. If hitch is removed, plug all holes in trunk pan or other body panels to prevent entry of water and exhaust fumes. A hitch or ball which has been damaged should be removed and replaced. Observe safety precautions when working beneath a vehicle and wear eye protection. Follow car maker's specs for maximum trailer weight and tongue weight. Do not cut access or attachment holes with a torch.



CEQUENT[®]
PERFORMANCE PRODUCTS