

INSTALLATION INSTRUCTIONS

EQUIPMENT REQUIRED:

WIRING ACCESS LOCATION: PC3, PC4

DRILL BITS: 1/2

HITCH REQUIRES 1/2" PIN AND CLIP

WRENCHES: (TIGHTEN ALL FASTENERS WITH TORQUE WRENCH) 3/4, 9/16, 11/16, 13mm, 16mm, 17mm

VEHICLE
CHRYSLER CIRRUS (ALL MODELS)
CHRYSLER SEBRING (4 DOOR)
DODGE STRATUS (4 DOOR)
PLYMOUTH BREEZE (ALL MODELS)

HITCH NO.

36301
06977
36801 UHAUL

3500 LB MAX GROSS TRAILER WT
300 LB MAX TONGUE WEIGHT
DO NOT EXCEED TOWING VEHICLE RATINGS

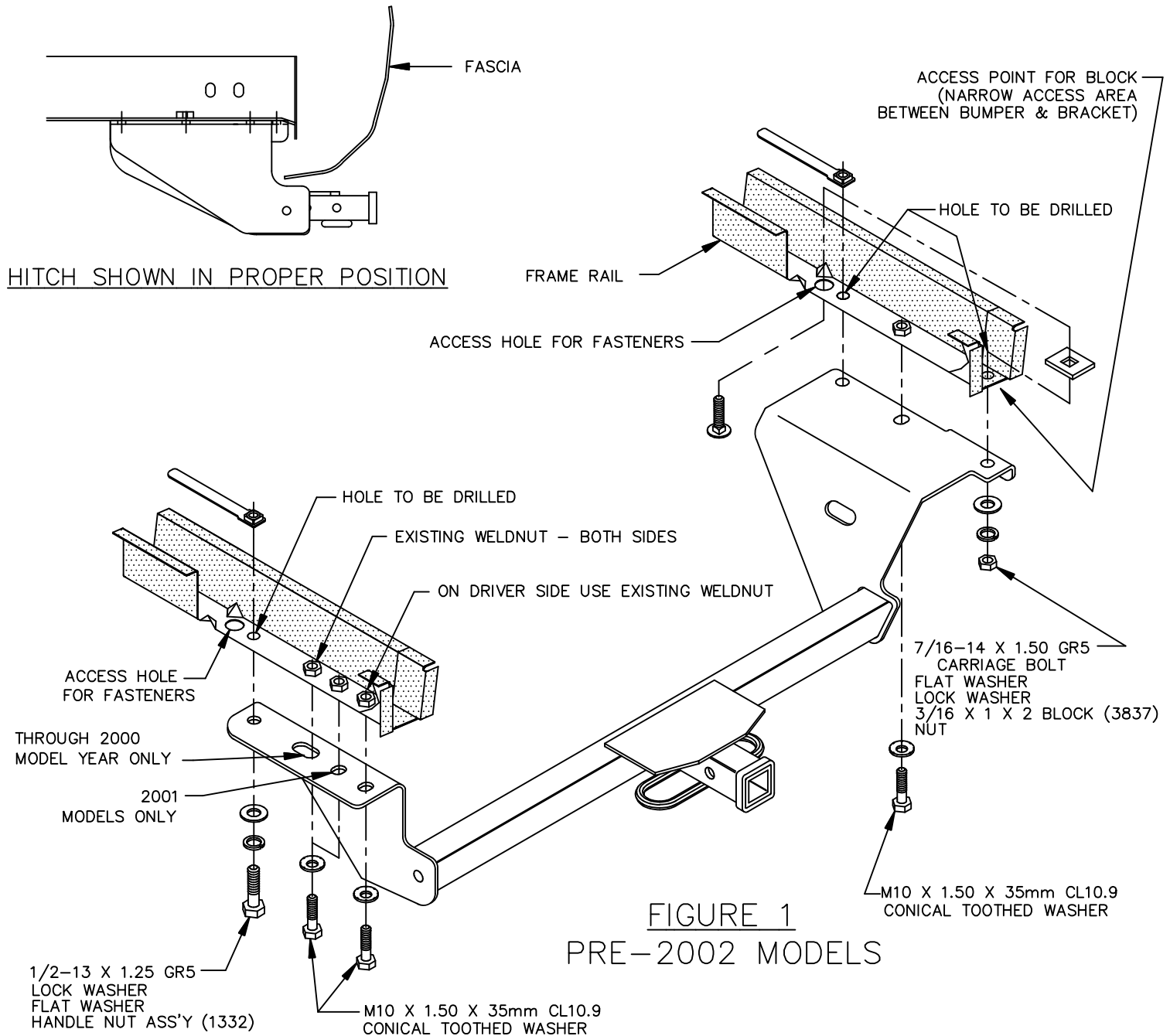


FIGURE 1
PRE-2002 MODELS

THIS PRODUCT COMPLIES WITH SAFETY SPECIFICATIONS AND REQUIREMENTS FOR CONNECTING DEVICES AND TOWING SYSTEMS OF THE STATE OF NEW YORK AND V.E.S.C. REGULATION V-5.

APPROX WEIGHT (LB.)	29	FASTENER KIT NO.	F36301
---------------------	----	------------------	--------

NOTE: Check hitch frequently, making sure all fasteners and ball are properly tightened. If hitch is removed, plug all holes in trunk pan or other body panels to prevent entry of water and exhaust fumes. A hitch or ball which has been damaged should be removed and replaced. Observe safety precautions when working beneath a vehicle and wear eye protection. Follow car maker's specs for maximum trailer weight and tongue weight. Do not cut access or attachment holes with a torch.

Cequent Performance Products
Plymouth, Michigan

PRINTED IN MEXICO

INSTALLATION INSTRUCTIONS

VEHICLE	HITCH NO.
CHRYSLER CIRRUS (ALL MODELS)	36301
CHRYSLER SEBRING (4 DOOR)	06977
DODGE STRATUS (4 DOOR)	36801
PLYMOUTH BREEZE (ALL MODELS)	

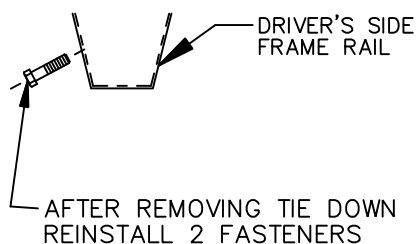


FIGURE 2

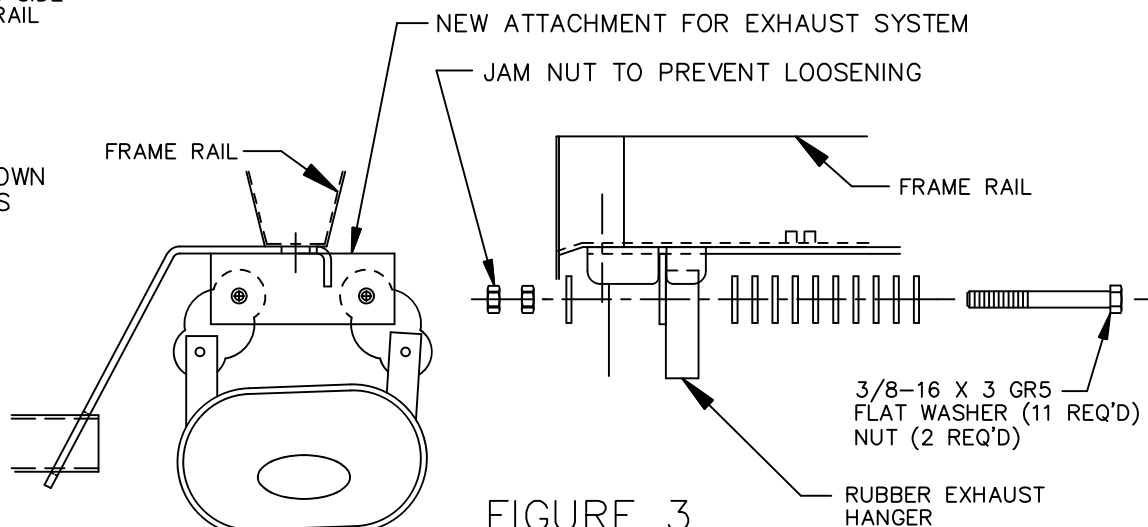
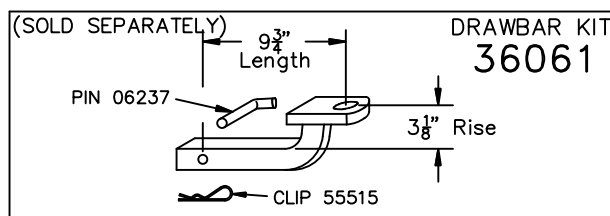


FIGURE 3

RELOCATE EXHAUST FOR HITCH CLEARANCE

1. REMOVE TIE-DOWN HOOK ON DRIVER'S SIDE FRAME RAIL, IF PRESENT.
NOTE: REINSTALL TWO (2) OF THE FASTENERS IN THE SIDE OF THE FRAME, SEE FIGURE 2.
2. LOWER EXHAUST SYSTEM BY REMOVING TWO 8mm BOLTS AND DISCONNECTING THE EXHAUST HANGER BRACKET FROM THE FRAME RAIL. DETACH THE RUBBER EXHAUST HANGER BY PRYING IT OFF THE EXHAUST HANGER BRACKET. DISCONNECT THE RUBBER EXHAUST HANGER FORWARD OF THE MUFFLER.
3. REMOVE THE 10mm BUMPER BRACKET BOLT, ON THE BOTTOM OF PASSENGER SIDE FRAME RAIL.
4. RAISE HITCH INTO POSITION AND LOOSELY INSTALL THE THREE 10mm BOLTS PROVIDED INTO EXISTING WELDNUTS.
5. ON PRE-2002 MODELS
USING THE HITCH AS A TEMPLATE DRILL 1/2" HOLES IN THE FRAME RAIL AT THE FORWARD ATTACHMENT ON EACH SIDE AND AT THE REAR ATTACHMENT ON THE PASSENGER SIDE.
ON 2002 & LATER MODELS
USING THE HITCH AS A TEMPLATE DRILL 1/2" HOLES IN THE FRAME RAIL AT THE REARWARD ATTACHMENT ON EACH SIDE. FORWARD ATTACHMENT HOLES ARE EXISTING.
6. INSTALL 7/16 FASTENERS AS SHOWN IN FIGURES 1 OR 4.
NOTE: LOOSENING THE CENTER ATTACHMENT MAY EASE INSTALLATION.
7. USING ACCESS HOLE IN FRAME INSTALL HANDLE NUT ASS'Y AS SHOWN IN FIGURES 1 OR 4. INSTALL REMAINING 1/2" FASTENERS AS SHOWN IN FIGURES 1 OR 4.
8. RAISE EXHAUST SYSTEM INTO POSITION AS SHOWN IN FIGURE 3, INSTALL 3/8 X 3" LG. BOLT AND FASTENERS. JAM NUTS TOGETHER TO PREVENT LOOSENING. REATTACH FORWARD RUBBER EXHAUST HANGER.
9. RETURN TIE-DOWN HOOK, TIE DOWN FASTENERS, EXHAUST HANGER BRACKET, 10mm AND 8mm FASTENERS TO VEHICLE OWNER, FOR REATTACHMENT IN CASE HITCH IS REMOVED.

TIGHTEN 1/2 GR5 FASTENERS TO 50 LB.-FT.
TIGHTEN 7/16-14 GR5 FASTENERS TO 50 LB.-FT.
TIGHTEN 10mm CL10.9 FASTENERS TO 42 LB.-FT.
TIGHTEN 3/8-16 GR5 FASTENERS TO 31 LB.-FT.



USE ONLY THE DRAWBAR SHOWN FOR CORRECT BUMPER CLEARANCE AND HEIGHT.
DRAWBAR MUST BE USED IN THE RISE POSITION ONLY.

THIS PRODUCT COMPLIES WITH SAFETY SPECIFICATIONS AND REQUIREMENTS FOR CONNECTING DEVICES AND TOWING SYSTEMS OF THE STATE OF NEW YORK AND V.E.S.C. REGULATION V-5.

APPROX WEIGHT (LB.)	29	FASTENER KIT NO.	F36301
---------------------	----	------------------	--------

NOTE: Check hitch frequently, making sure all fasteners and ball are properly tightened. If hitch is removed, plug all holes in trunk pan or other body panels to prevent entry of water and exhaust fumes. A hitch or ball which has been damaged should be removed and replaced. Observe safety precautions when working beneath a vehicle and wear eye protection. Follow car maker's specs for maximum trailer weight and tongue weight. Do not cut access or attachment holes with a torch.

Cequent Performance Products
Plymouth, Michigan

PRINTED IN MEXICO

INSTALLATION INSTRUCTIONS

VEHICLE	HITCH NO.
CHRYSLER CIRRUS (ALL MODELS)	36301
CHRYSLER SEBRING (4 DOOR)	06977
DODGE STRATUS (4 DOOR)	36801 UHAUL
PLYMOUTH BREEZE (ALL MODELS)	

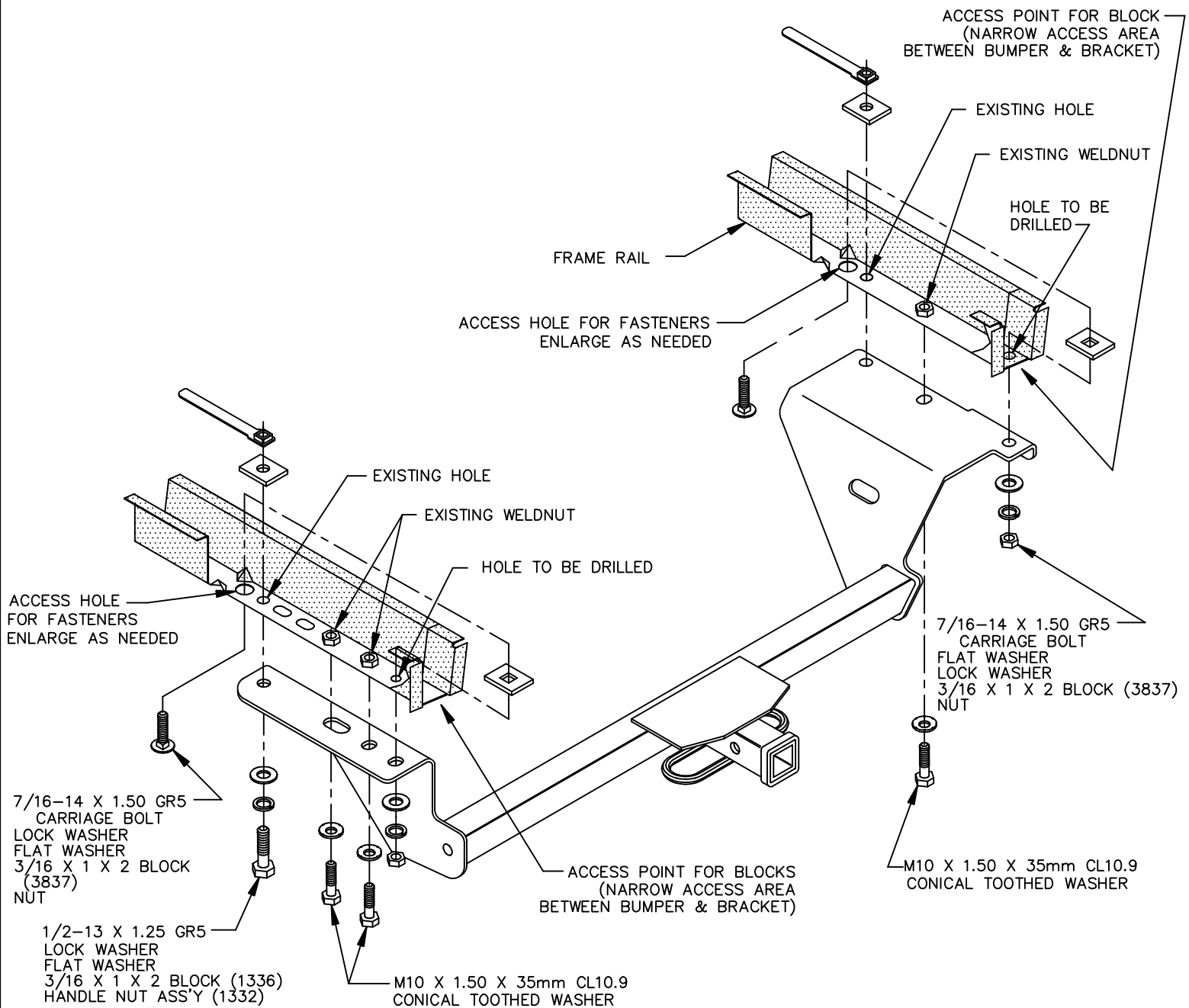


FIGURE 4
2002 & LATER MODELS

THIS PRODUCT COMPLIES WITH SAFETY SPECIFICATIONS AND REQUIREMENTS FOR CONNECTING DEVICES AND TOWING SYSTEMS OF THE STATE OF NEW YORK AND V.E.S.C. REGULATION V-5.

APPROX WEIGHT (LB.)	29	FASTENER KIT NO.	F36301
---------------------	----	------------------	--------

NOTE: Check hitch frequently, making sure all fasteners and ball are properly tightened. If hitch is removed, plug all holes in trunk pan or other body panels to prevent entry of water and exhaust fumes. A hitch or ball which has been damaged should be removed and replaced. Observe safety precautions when working beneath a vehicle and wear eye protection. Follow car maker's specs for maximum trailer weight and tongue weight. Do not cut access or attachment holes with a torch.

Cequent Performance Products
Plymouth, Michigan

PRINTED IN MEXICO