

# INSTALLATION INSTRUCTIONS

VEHICLE

CHRYSLER CONCORDE

## EQUIPMENT REQUIRED:

## WIRING ACCESS LOCATION:

DRILL BITS: 3/8, 1/2, 1"

HITCH REQUIRES 1/2" PIN AND CLIP

WRENCHES: (TIGHTEN ALL FASTENERS WITH TORQUE WRENCH) 7/8

3500 LB MAX GROSS TRAILER WT  
300 LB MAX TONGUE WEIGHT  
DO NOT EXCEED TOWING VEHICLE RATINGS

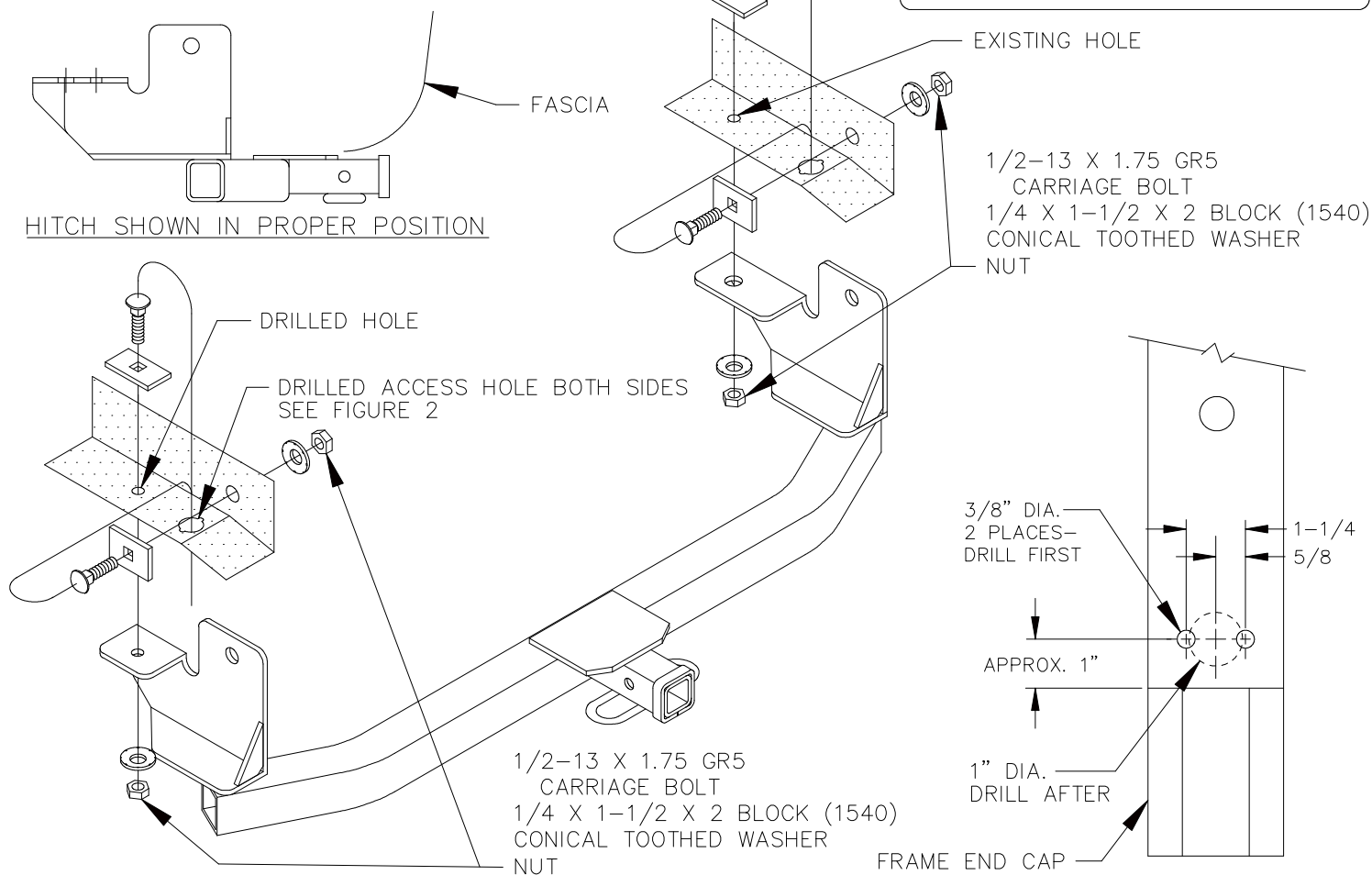


FIGURE 1

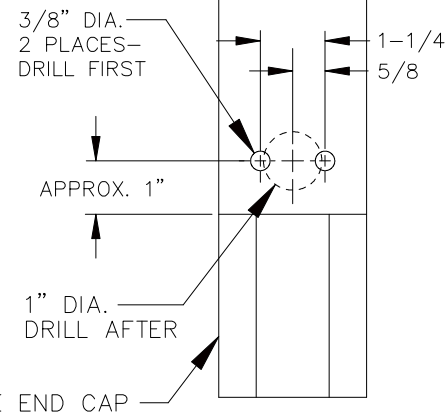
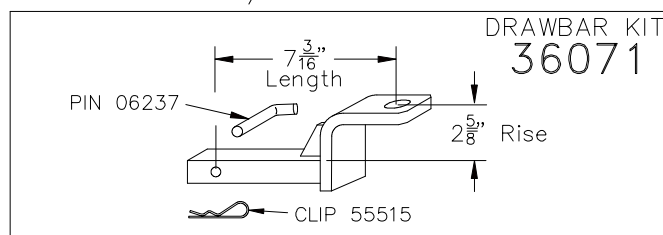


FIGURE 2

1. DRILL ACCESS HOLES IN BOTH FRAME RAILS TO INSERT FASTENERS. SEE FIGURE 2 FOR LOCATION AND DIMENSIONS.
2. RAISE HITCH IN POSITION AND FISHWIRE REARMOIST FASTENERS AS SHOWN IN FIGURE 1.
3. USING HITCH AS A TEMPLATE DRILL A 1/2 HOLE ON DRIVERS SIDE OF VEHICLE.
4. FISHWIRE REMAINING FASTENERS AS SHOWN IN FIGURE 1.

TIGHTEN ALL 1/2 GR5 FASTENERS TO 75 LB-FT.



USE ONLY THE DRAWBAR SHOWN FOR CORRECT BUMPER CLEARANCE AND HEIGHT.  
DRAWBAR MUST BE USED IN THE RISE POSITION ONLY.

THIS PRODUCT COMPLIES WITH SAFETY SPECIFICATIONS AND REQUIREMENTS FOR CONNECTING DEVICES AND TOWING SYSTEMS OF THE STATE OF NEW YORK, V.E.S.C. REGULATION V-5 AND SAE J684.

APPROX WEIGHT (LB.)  
28

FASTENER KIT  
01131-056

NOTE: Check hitch frequently, making sure all fasteners and ball are properly tightened. If hitch is removed, plug all holes in trunk pan or other body panels to prevent entry of water and exhaust fumes. A hitch or ball which has been damaged should be removed and replaced. Observe safety precautions when working beneath a vehicle and wear eye protection. Follow car maker's specs for maximum trailer weight and tongue weight. Do not cut access or attachment holes with a torch.

TOWING PRODUCTS  
Plymouth, Michigan