

# INSTALLATION INSTRUCTIONS

EQUIPMENT REQUIRED: LONG SOCKET EXTENSION

WIRING ACCESS LOCATION: SUV4

DRILL BITS:

HITCH REQUIRES 1/2" PIN AND CLIP.

WRENCHES: (TIGHTEN ALL FASTENERS WITH TORQUE WRENCH) 15mm, 14mm, 17mm

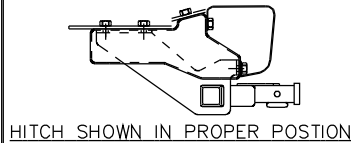
## VEHICLE

CHEVROLET ASTRO VAN

GMC SAFARI VAN

STANDARD AND EXTENDED

3500 LB MAX GROSS TRAILER WT  
300 LB MAX TONGUE WEIGHT  
DO NOT EXCEED TOWING VEHICLE RATINGS



CHECK CLEARANCE BETWEEN  
BRAKE LINE, PARKING BRAKE  
CABLE AND STOWED SPARE TIRE.

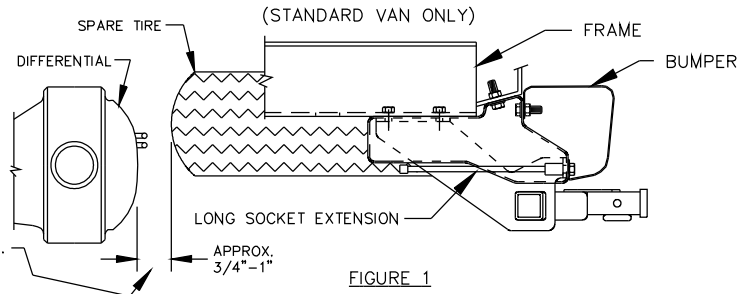


FIGURE 1

FASTENERS  
TYPICAL BOTH SIDES

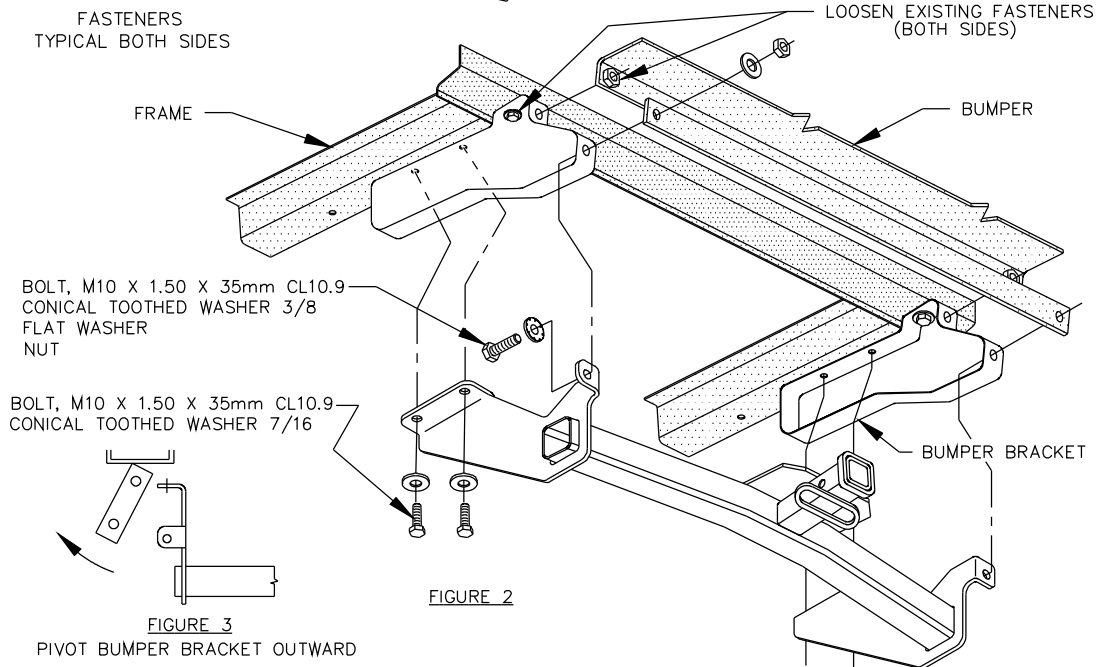


FIGURE 2

FIGURE 3

PIVOT BUMPER BRACKET OUTWARD

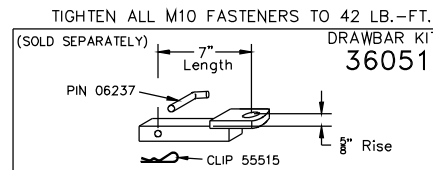
## WARNING:

ON STANDARD VANS, A FULL SIZE SPARE CANNOT BE STOWED UNDER VEHICLE WITH HITCH INSTALLED, BECAUSE CLEARANCE WITH BRAKE LINE AND PARKING BRAKE CABLE MOUNTED ON DIFFERENTIAL MAY NOT BE ADEQUATE. ON EXTENDED VANS A FULL SIZE SPARE CAN BE STOWED UNDER VEHICLE WITH HITCH INSTALLED. IF CLEARANCE WITH ANY SPARE TIRE IS NOT ADEQUATE, SPARE MUST BE STOWED ELSEWHERE ON VEHICLE, SEE FIGURE 1.

1. REMOVE (2) FORWARD BUMPER BRACKET TO FRAME BOLTS AND (1) BOTTOM BUMPER BRACKET TO BUMPER BOLT, ON EACH SIDE, SEE FIGURE 2. LOOSEN REMAINING BUMPER BRACKET BOLTS. RETURN BOLTS TO VEHICLE OWNER FOR REINSTALLATION IN THE EVENT THAT THE HITCH IS REMOVED FROM THE VEHICLE.

**NOTE:** BUMPER BRACKETS REMAIN IN PLACE WITH HITCH INSTALLED.

2. WHILE PIVOTING THE BUMPER BRACKETS OUTWARD, LIFT THE RECEIVER INTO POSITION, CENTERING THE SLOTS IN THE SIDE BRACKETS OVER THE WELDNUTS IN THE FRAME, SEE FIGURE 3.
3. INSTALL FASTENERS AS SHOWN IN FIGURE 2. A SOCKET AND LONG EXTENSION IS NECESSARY TO TIGHTEN THE LOWER BUMPER BOLTS, SEE FIGURE 1.



USE ONLY THE DRAWBAR SHOWN FOR CORRECT BUMPER CLEARANCE AND HEIGHT.

DRAWBAR MUST BE USED IN THE RISE POSITION ONLY.

THIS PRODUCT COMPLIES WITH SAFETY SPECIFICATIONS AND REQUIREMENTS FOR CONNECTING DEVICES AND TOWING SYSTEMS OF THE STATE OF NEW YORK, V.E.S.C. REGULATION V-5 AND SAE J684.

APPROX WEIGHT (LB.)  
28

FASTENER KIT  
01130-965

**NOTE:** Check hitch frequently, making sure all fasteners and ball are properly tightened. If hitch is removed, plug all holes in trunk pan or other body panels to prevent entry of water and exhaust fumes. A hitch or ball which has been damaged should be removed and replaced. Observe safety precautions when working beneath a vehicle and wear eye protection. Follow car maker's specs for maximum trailer weight and tongue weight. Do not cut access or attachment holes with a torch.

**HORIZON**  
GLOBAL

PRINTED IN MEXICO