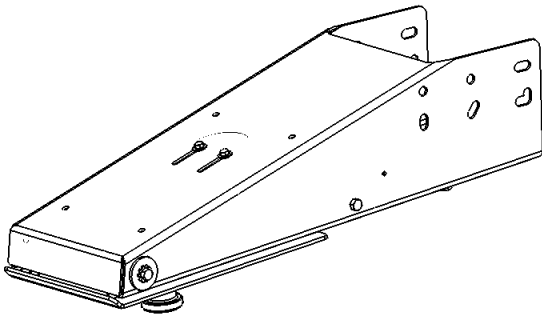


Installation Instructions

Part Numbers:

5th AIRBORNE

5AB-E510-710



DEALER/INSTALLER:

(1) Provide this Manual to end user

END USER:

(1) Read and follow this Manual every time you use this product.

(2) Save this Manual for Future Reference.

(3) Pass on copies of Manual to any other users or owner.

PIN BOX SHOWN ASSEMBLED

Equipment Required:

Wrenches: 15/16", 9/16" &

TORQUE WRENCH

**Do Not Exceed Lower of Towing Vehicle Manufacturer's Rating,
Trailer Manufacturer's Rating or**

Max Gross Trailer WT (LB)	Max Pin WT (LB)
21,000 LB	4,200 LB

1	Qty. (1)	Air Spring
2	Qty. (1)	Air Line Fill
3	Qty. (2)	Shock Bolt (1/2-13 X 3.75")
4	Qty. (6)	1/2-13 Nylon Lock Nut
5	Qty. (1)	Shock
6	Qty. (2)	3/8-16 x 1 GR5 Bolt
7	Qty. (2)	3/8" Conical Washer
8	Qty. (2)	3/8-16x1.5 GR5 Bolt
9	Qty. (1)	Pivot Shaft
10	Qty. (2)	Special Washer
11	Qty. (1)	Star Washer
12	Qty. (6)	1/2 -13 x 1.25 GR 5 Bolt
13	Qty. (2)	3/8" Flat Washer

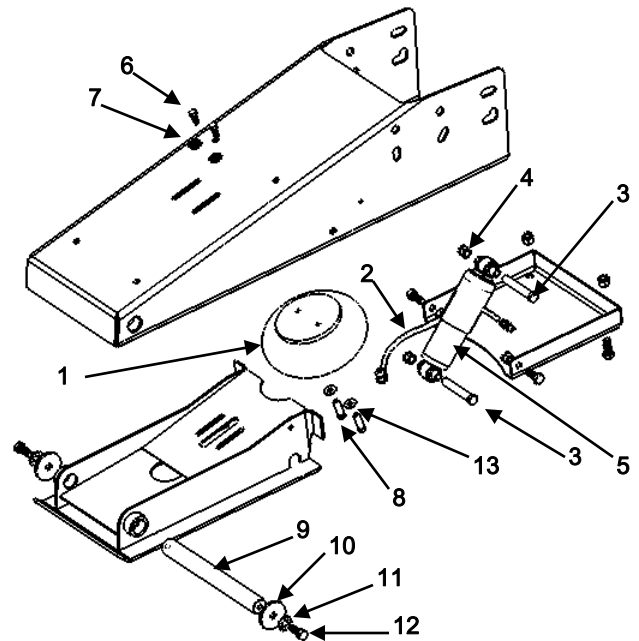


Figure 1

INDEX

1. GUIDELINES FOR MATCHING TOW VEHICLE AND TRAILER	P. 2
2. ASSEMBLY INSTRUCTIONS	P. 3
3. ADJUSTING THE AIR SPRING	P. 4
5. BEFORE EACH TRIP	P. 4
6. MAINTENANCE	P. 4
7. NOTES	P. 5
8. LIMITED LIFETIME WARRANTY	P. 5

WARNING:

Failure to follow all of these instructions may result in death or serious injury!

Installation Instructions

5th AIRBORNE

GUIDELINES FOR MATCHING TOW VEHICLE AND TRAILER

WARNING:

Failure to check and follow tow ratings could result in tow vehicle damage or truck and trailer separation while towing.

- Trailer and its contents together must not exceed truck, hitch and/or trailer tow ratings.
- Towing vehicle must have a manufacturer's rated towing capacity equal to or greater than the gross trailer weight (dry weight of the trailer plus payload of the trailer). (See Fig. 2)
- Gross weight of trailer must not exceed 21,000 pounds for this product.
- King pin weight must not exceed 4,200 pounds (See Fig. 3). If in doubt have king pin weight measured by qualified facility.

1. Check Tow Ratings:

Vehicle Tow Rating: _____.

5th Airborne Pin Box Rating: **21,000 lbs.** _____.

Gross Trailer Weight (Figure 2): _____.

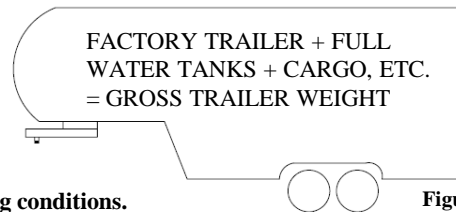
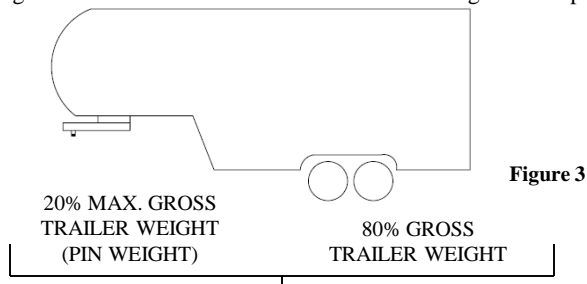


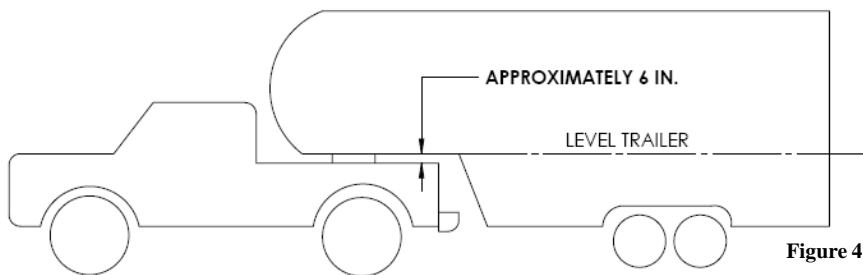
Figure 2

***Trailer weight should be the lowest of these recorded ratings for safe towing conditions.**

2. The 5th Airborne pin box is designed for a maximum of 20% Gross Trailer Weight on the pin (Pin Weight). See Fig. 3



3. The Height of the hitch and pin box should be adjusted so the trailer is approximately level as it is towed. Allow approximately 6 in. clearance between the top of the bed and the underside of the front of the trailer for pitch and yaw of the trailer (See Figure 4). For off-road use allow more clearance between pickup walls and trailer.



WARNING:

Avoid putting any part of your body under the trailer or between the truck and trailer. Unexpected or accidental movement of the truck or the trailer can cause serious injury or death

•If you must place any part of your body under the trailer or between the truck and trailer you MUST perform ALL of the following steps:

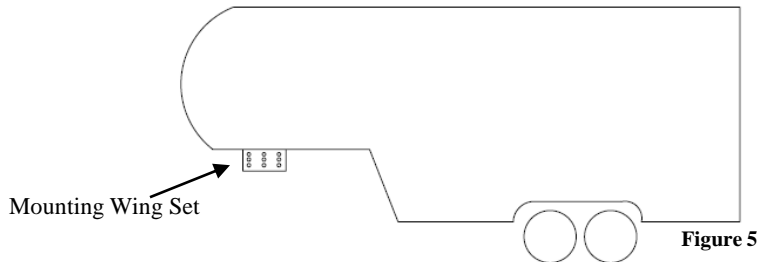
- Check that the truck transmission is in park
- Check that the emergency brake is set
- Block in front of and behind all trailer tires
- Check that the trailer landing gear are resting on firm ground

Installation Instructions

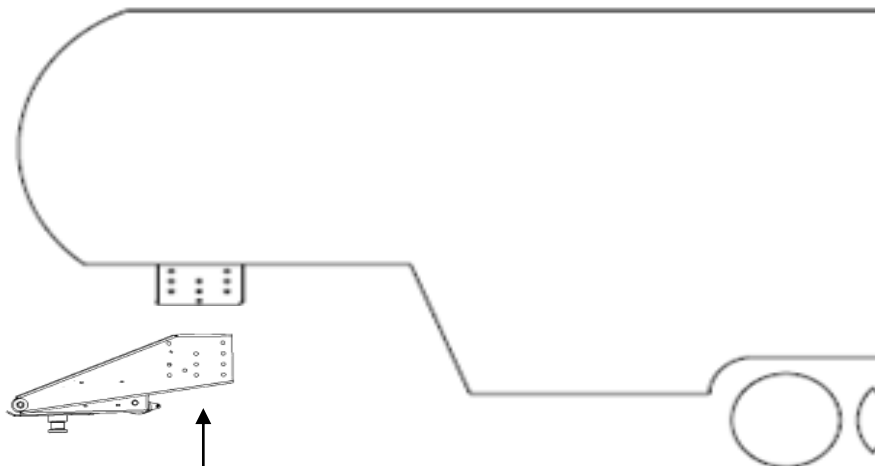
5th AIRBORNE

ASSEMBLY INSTRUCTIONS

1. Before removing the original pin box, take note of the number of bolts used attaching the existing pin box to the mounting wing set. Cequent Performance Products recommends using at least the same number of bolts upon installation as removed from the original pin box. (Figure 5)



2. Remove the existing pin box, taking care to remove any necessary wiring and/or break away switch if attached to the pin box. (If removed, the break away switch must be reinstalled after installation is complete)
3. Install the 5th Airborne inside the mounting wings (Figure 6), with exception to tube style pin boxes. Cequent Performance Products recommends using the hardware kit included with the pin box. It is all grade 8 hardware. For a 21K application install at least the hardware included as a minimum. (4 bolts per side, 2 front row & 2 rear row) Torque all bolts to the proper value listed in table 1.



Note: Installing the front bolts first may ease alignment.

⚠ WARNING: The 5th Airborne pin box is heavy, take care to maintain adequate support under the 5th Airborne arm until at least 2 bolts per side are installed. Failure to do so may result in death or serious injury.

Bolt Diameter	Torque
5/8" Bolts GR5	150 ft-lbs
5/8" Bolts GR8	210 ft-lbs
3/4" Bolts GR5	275 ft-lbs

Table 1

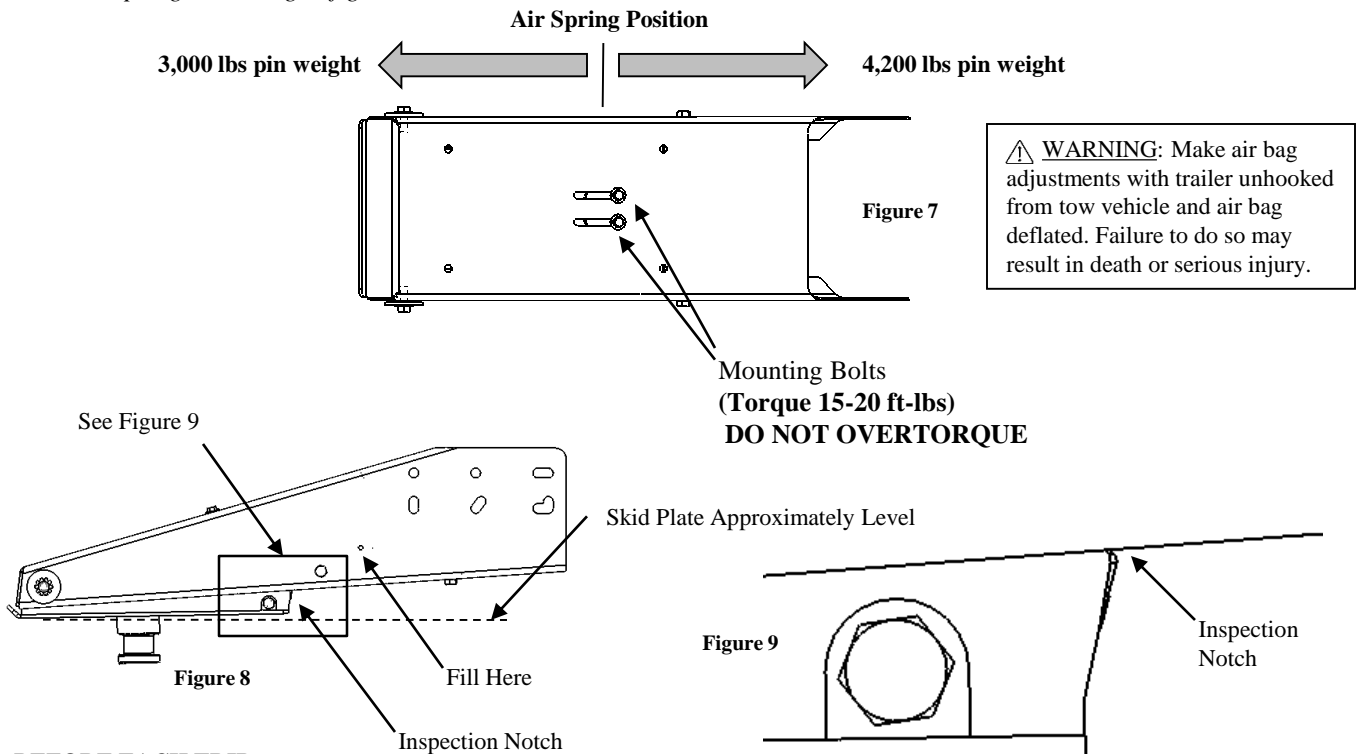
Installation Instructions

5th AIRBORNE

ADJUSTING THE AIR SPRING

1. Perform the hitching procedure following the proper hitching procedure according to the manual for your fifth wheel Hitch.
2. Add air to the air spring at the valve shown in figure 8. Continue adding air until the skid plate is level (on level ground) see figure 8. (Use the Inspection Notch on lower jaw of the pin box and line up with bottom side of body.)

The inspection notch is a good reference for setting air pressure in the spring, if more performance is desired the air bag position and pressure can be adjusted to suite your preference. The air spring position can be adjusted by loosening the mounting bolts shown in figure 7 and moving the bag as indicated per your loading condition. A good starting point for pressure setting is 80-100 psi. (Do Not Exceed 120 psi). If the ride is too soft, add more pressure. If the ride is harsh, remove pressure. If the pressure adjustment cannot maintain a satisfactory ride, reposition the air spring according to figure 7.



BEFORE EACH TRIP:

1. **CHECK YOUR EQUIPMENT:** Check that condition of all of your towing equipment and keep it in top condition.
2. Check to see that all bolts are properly tightened.
4. Check that the airbag pressure is set for your coach. (The skid plate should be near level when parked on level ground)

MAINTENANCE:

1. For ease of hookup; frequently lubricate the skid plate surface and the back side of the king pin.
2. Keep pin-box hitch painted to prevent rust and maintain a good appearance. (Do Not paint over labels)

Installation Instructions

5th AIRBORNE

NOTES:

LIMITED LIFETIME WARRANTY

- 1. Limited Lifetime Warranty (“Warranty”).** Cequent Performance Products, Inc. (“We” or “Us”) warrants to the original consumer purchaser only (“You”) that the product will be free from material defects in both material and workmanship for a period of lifetime of ownership, ordinary wear and tear excepted; provided that installation and use of the product is in accordance with product instructions. There are no other warranties, express or implied, including the warranty of merchantability or fitness for a particular purpose. This warranty is not transferable.
- 2. Limitations on the Warranty.** This Warranty does not cover: (a) normal wear and tear; (b) damage through abuse, neglect, misuse, or as a result of any accident or in any other manner; (c) damage from misapplication, overloading, or improper installation; (d) improper maintenance and repair; and (e) product alteration in any manner by anyone other than Us, with the sole exception of alterations made pursuant to product instructions and in a workmanlike manner.
- 3. Obligations of Purchaser.** To make a Warranty claim, contact Us at 47912 Halyard Drive Suite 100, Plymouth, MI, 48170, 1-888-521-0510, identify the product by model number, and follow the claim instructions that will be provided. Any returned product that is replaced by Us becomes our property. You will be responsible for return shipping costs. Please retain your purchase receipt to verify date of purchase and that You are the original consumer purchaser. The product and the purchase receipt must be provided to Us in order to process Your warranty claim.
- 4. Remedy Limits.** Product replacement is Your sole remedy under this Warranty. We shall not be liable for service or labor charges incurred in removing or replacing a product or any incidental or consequential damages of any kind.
- 5. Assumption of Risk.** You acknowledge and agree that any use of the product for any purpose other than the specified use(s) stated in the product instructions is at Your own risk.
- 6. Governing Law.** This Warranty gives You specific legal rights, and You also may have other rights which vary from state to state. This Warranty is governed by the laws of the State of Michigan, without regard to rules pertaining to conflicts of law. The state courts located in Oakland County, Michigan shall have exclusive jurisdiction for any disputes relating to this Warranty.

Cequent Performance Products
47912 Halyard Drive Suite 100
Plymouth, MI 48170